

# Number One Kirkstall Forge Leeds



**A glazed façade with deep mullions and bronze pressed aluminium panel cladding, designed, specified and installed by GLASSOLUTIONS, helped to create the ideal balance between aesthetics and functionality at Number One Kirkstall Forge, a state-of-the-art office building at the brand-new Kirkstall Forge ‘urban village’ in Leeds.**

## Overview

Located to the north-west of Leeds, Number One Kirkstall Forge is the first commercial building to be completed as part of the £400 million Number One Kirkstall Forge ‘urban village’ scheme. On completion, Number One Kirkstall Forge will offer Grade A office buildings, contemporary housing, green

spaces, cafés, bars and restaurants in a stunning riverside location.

Brought to the project by principal contractors Wates Construction, the GLASSOLUTIONS Contracting team was tasked with the design, specification and installation of a

glazed façade for the building, with deep mullions and bronze pressed aluminium panel cladding. In addition, the architectural plans featured a spectacular 8m unsupported mid-span entrance atrium which GLASSOLUTIONS was also briefed to deliver.

## Number One Kirkstall Forge Leeds

Client:  
Main contractor:  
Architect:  
Project type:  
Completed:

**CEG**  
**Wates**  
**Cooper Cromar**  
**New build office space**  
**November 2017**



The glazing installation was required to be compliant with the highest environmental sustainability standards to help the building achieve a BREEAM 'Outstanding' rating. Additionally,



Number One Kirkstall Forge's enviable proximity to the development's own railway station gave rise to the need for acoustically-enhanced glass, to limit noise transfer and allow residents to enjoy the tranquillity of Number One Kirkstall Forge's woodland location.

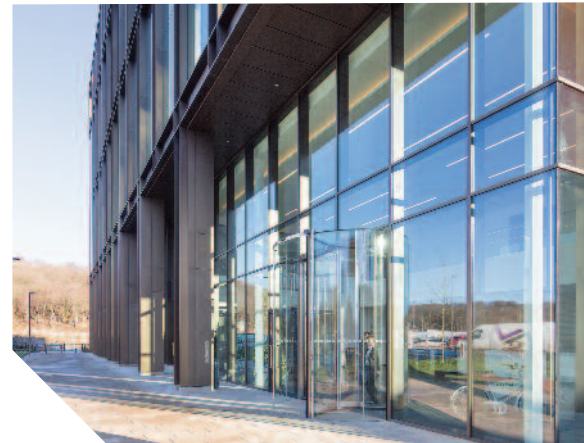
To give Number One Kirkstall

Forge the ideal balance between aesthetics and functionality, the GLASSOLUTIONS Contracting division specified a combination of WICONA aluminium systems integrating with high performance insulating glass units, spandrels and sandwich panels. The 'stick' curtain walling was fabricated using WICONA's Wictec 50 systems, which provide a slim 50mm face width and ensure excellent thermal insulation through the incorporation of a uPVC thermal break. This was supported with bespoke aluminium cladding fabricated by Panel Systems, and Aerolite stone cladding tiles supplied by Tiles International.

For the glazing, it was vital to choose products which would help the building adhere to the high efficiency standards it aimed to achieve, with low levels of

heat transmission and solar gain. To meet this brief, GLASSOLUTIONS installed insulated glass units comprising Saint Gobain Glass' SGG COOL-LITE XTREME 70-33ii, with single-glazed units used for the spandrel panels to combat overheating. With a G-value of only 0.33 and an excellent centre pane U-value of 1.0W/m<sup>2</sup>K, this specification reduces the need for both additional heating and cooling, making it ideal for delivering energy savings and improved thermal insulation.

GLASSOLUTIONS' work on the Number One Kirkstall Forge site began in July 2016 and finished in November; the full building was completed in November 2017, with the first occupants moving into the development in December 2017.



For more information, and to discuss the most suitable solution for your needs, contact GLASSOLUTIONS today on 0844 892 2690 or visit [www.glassolutions.co.uk/contracting](http://www.glassolutions.co.uk/contracting)

**Saint-Gobain Glass (United Kingdom) Limited.**

Trading as GLASSOLUTIONS.

Registered in England. Company No. 2442570

Registered Head Office:

Saint-Gobain House  
Binley Business Park  
Coventry, CV3 2TT



**Your glass. Our world.**

[www.glassolutions.co.uk](http://www.glassolutions.co.uk) [enquiries@glassolutions.co.uk](mailto:enquiries@glassolutions.co.uk)

For internal use only.